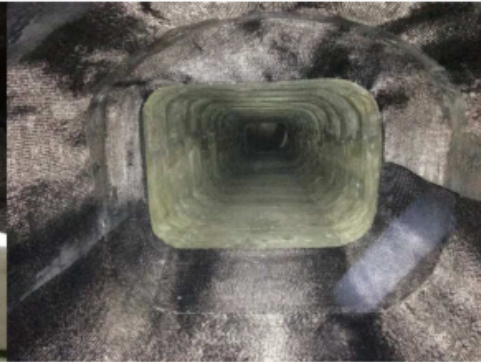


## 48-inch Culvert Rehabilitation for Salt Lake City



- Debris was cleaned and removed at the inside of the culvert.
- #4 wire was installed where added concrete was 4" thick. All culvert section discontinuities were corrected by pouring concrete at these locations and a finished 3:1 slope was made, as well as a smooth finish was provided.
- The corners of the reinforced concrete box (RCB) section and bottom of masonry section were chamfered to a 6" radius.
- Patching work and the FRP installation were performed along the entire length of the culvert per design drawings.